



Test Report

No.: GZ0607107283A/CHEM

Date: JUL 25, 2006

Page 1 of 4

KJ (H.K) ELECTRONICS CO., LIMITED

1F, SUN LING PLAZA, 30 ON KUI STREET, FANLING, N.T. HONGKONG

Report on the submitted sample said to be V-CHIP ALUMINUM ELECTROLYTIC CAPACITORS

SGS Ref No. : SZ060734515RS

Sample Receiving Date : JUL 11, 2006


Testing Period : JUL 11, 2006 TO JUL 20, 2006

Test Requested : (1) As specified by client, to determine the Lead, Cadmium, Mercury & Hexavalent Chromium content in the submitted sample.
(2) Determination of PBBs (Polybrominated Biphenyls), PBDEs (Polybrominated Diphenylethers) of the submitted sample.

Test Method : (1) Lead content - With reference to EPA 3050B: 1996 & other acid digestion.
Cadmium content - With reference to BS EN1122: 2001 method B & other acid digestion.
Mercury content - With reference to EPA 3052: 1996 & EPA 7473: 1998 & other acid digestion.
Hexavalent Chromium content - With reference to EPA 3060A: 1996 & EPA 7196A: 1992 & with reference to IEC / TC111 (Draft) (Sec. 8.5.2 – Boiling-water-extraction method).
Analysis was performed by Atomic Absorption Spectrometer & Inductively Coupled Plasma Atomic Emission Spectrometer (ICP-AES) & Direct Mercury analyzer & UV-VIS Spectrophotometer.
(2) With reference to EPA 3540C & EPA 3550C. Analysis was performed by GC-MS.

Results : Please refer to next page.

Signed for and on behalf of
SGS-CSTC Ltd.


Wang HongLei, Leo
Sr. Engineer

This Test Report is issued by the Company subject to its General Conditions of Service printed overleaf or attached. Said Conditions are also available upon request or are accessible at www.sgs.com. Attention is drawn to the limitations of liability, indemnification and jurisdictional policies defined therein. The results shown in this Test Report refer only to the sample(s) tested unless otherwise stated and such sample(s) are retained for 90 days only. This Test Report shall not be reproduced except in full, without written approval of the Company.

SGS-CSTC Standards Technical Services Co., Ltd.
Guangzhou Branch Chemical Laboratory

198 KEZHU Road, SCIENTECH Park Guangzhou Economic & Technology Development District, Guangzhou, China 510663
中国·广州·经济技术开发区科学城科珠路198号 邮编: 510663

t (86-20)82155555 f (86-20)82075125 www.cn.sgs.com
t (86-20)82155555 f (86-20)82075125 e sgs.china@sgs.com

GZCM 780787

Member of the SGS Group (SGS SA)

Test Report

No.: GZ0607107283A/CHEM

Date: JUL 25, 2006

Page 2 of 4

Results :

(1)

| Item | Unit | MDL | No.1 | No.2 | No.3 | No.4 |
|--------------------------------------|------|-----|------|------|------|------|
| Lead Content (Pb) | ppm | 2 | 7 | N.D. | 27 | N.D. |
| Cadmium Content (Cd) | ppm | 2 | N.D. | N.D. | N.D. | N.D. |
| Mercury Content (Hg) | ppm | 2 | N.D. | N.D. | N.D. | N.D. |
| Hexavalent Chromium Content [Cr(VI)] | ppm | 2 | -- | N.D. | -- | N.D. |

| Item | Unit | MDL | No.5 | No.6 | No.7 | No.8 | No.9 |
|--------------------------------------|------|-----|------|------|------|------|------|
| Lead Content (Pb) | ppm | 2 | N.D. | 6 | 22 | 9 | N.D. |
| Cadmium Content (Cd) | ppm | 2 | N.D. | N.D. | N.D. | N.D. | N.D. |
| Mercury Content (Hg) | ppm | 2 | N.D. | N.D. | N.D. | N.D. | N.D. |
| Hexavalent Chromium Content [Cr(VI)] | ppm | 2 | N.D. | N.D. | -- | N.D. | N.D. |

Note : - N.D. = Not Detected (< MDL)
 - MDL = Method Detection Limit
 - ppm = mg/kg

| Item | No.1 | No.3 | No.7 |
|--------------------------------------|----------|----------|----------|
| Hexavalent Chromium Content [Cr(VI)] | Negative | Negative | Negative |

Note : - Negative means the concentration of Hexavalent Chromium extracted from 50cm² sample is less than the detection limit.
 - Detection limit of Cr(VI) in solution = 0.02 mg/kg Cr(VI) extracted from 50cm² sample surface area by boiling-water-extraction method

This Test Report is issued by the Company subject to its General Conditions of Service printed overleaf or attached. Said Conditions are also available upon request or are accessible at www.sgs.com. Attention is drawn to the limitations of liability, indemnification and jurisdictional policies defined therein. The results shown in this Test Report refer only to the sample(s) tested unless otherwise stated and such sample(s) are retained for 90 days only. This Test Report shall not be reproduced except in full, without written approval of the Company.



188 KEZHU Road, SCIENTECH Park Guangzhou Economic & Technology Development District, Guangzhou, China 510663
 中国·广州·经济技术开发区科学城科珠路198号 邮编: 510663

t (86-20)82155555 f (86-20)82075125 www.cn.sgs.com
 t (86-20)82155555 f (86-20)82075125 e sgs.china@sgs.com

GZCM 780788

Member of the SGS Group (SGS SA)

Test Report

No.: GZ0607107283A/CHEM

Date: JUL 25, 2006

Page 3 of 4

(2)

| Item | Unit | MDL | No.1 | No.2 | No.3 | No.4 |
|--|------|-----|------|------|------|------|
| Flame Retardants | | | | | | |
| Polybrominated Biphenyls (PBBs) | | | | | | |
| Monobromobiphenyl | ppm | 5 | N.D. | N.D. | N.D. | N.D. |
| Dibromobiphenyl | ppm | 5 | N.D. | N.D. | N.D. | N.D. |
| Tribromobiphenyl | ppm | 5 | N.D. | N.D. | N.D. | N.D. |
| Tetrabromobiphenyl | ppm | 5 | N.D. | N.D. | N.D. | N.D. |
| Pentabromobiphenyl | ppm | 5 | N.D. | N.D. | N.D. | N.D. |
| Hexabromobiphenyl | ppm | 5 | N.D. | N.D. | N.D. | N.D. |
| Heptabromobiphenyl | ppm | 5 | N.D. | N.D. | N.D. | N.D. |
| Octabromobiphenyl | ppm | 5 | N.D. | N.D. | N.D. | N.D. |
| Nonabromodiphenyl | ppm | 5 | N.D. | N.D. | N.D. | N.D. |
| Decabromodiphenyl | ppm | 5 | N.D. | N.D. | N.D. | N.D. |
| Polybrominated Diphenylethers (PBDEs) | | | | | | |
| Monobromodiphenyl ether | ppm | 5 | N.D. | N.D. | N.D. | N.D. |
| Dibromodiphenyl ether | ppm | 5 | N.D. | N.D. | N.D. | N.D. |
| Tribromodiphenyl ether | ppm | 5 | N.D. | N.D. | N.D. | N.D. |
| Tetrabromodiphenyl ether | ppm | 5 | N.D. | N.D. | N.D. | N.D. |
| Pentabromodiphenyl ether | ppm | 5 | N.D. | N.D. | N.D. | N.D. |
| Hexabromodiphenyl ether | ppm | 5 | N.D. | N.D. | N.D. | N.D. |
| Heptabromodiphenyl ether | ppm | 5 | N.D. | N.D. | N.D. | N.D. |
| Octabromodiphenyl ether | ppm | 5 | N.D. | N.D. | N.D. | N.D. |
| Nonabromodiphenyl ether | ppm | 5 | N.D. | N.D. | N.D. | N.D. |
| Decabromodiphenyl ether | ppm | 5 | N.D. | N.D. | N.D. | N.D. |

This Test Report is issued by the Company subject to its General Conditions of Service printed overleaf or attached. Said Conditions are also available upon request or are accessible at www.sgs.com. Attention is drawn to the limitations of liability, indemnification and jurisdictional policies defined therein. The results shown in this Test Report refer only to the sample(s) tested unless otherwise stated and such sample(s) are retained for 90 days only. This Test Report shall not be reproduced except in full, without written approval of the Company.



188 KEZHU Road, SCIENTECH Park Guangzhou Economic & Technology Development District, Guangzhou, China 510663
中国·广州·经济技术开发区科学城科珠路198号 邮编: 510663

t (86-20)82155555 f (86-20)82075125 www.cn.sgs.com
t (86-20)82155555 f (86-20)82075125 e sgs.china@sgs.com

GZCM 780789

Member of the SGS Group (SGS SA)

Test Report

No.: GZ0607107283A/CHEM

Date: JUL 25, 2006

Page 4 of 4

| Item | Unit | MDL | No.5 | No.6 | No.7 | No.8 | No.9 |
|--|------|-----|------|------|------|------|------|
| Flame Retardants | | | | | | | |
| Polybrominated Biphenyls (PBBs) | | | | | | | |
| Monobromobiphenyl | ppm | 5 | N.D. | N.D. | N.D. | N.D. | N.D. |
| Dibromobiphenyl | ppm | 5 | N.D. | N.D. | N.D. | N.D. | N.D. |
| Tribromobiphenyl | ppm | 5 | N.D. | N.D. | N.D. | N.D. | N.D. |
| Tetrabromobiphenyl | ppm | 5 | N.D. | N.D. | N.D. | N.D. | N.D. |
| Pentabromobiphenyl | ppm | 5 | N.D. | N.D. | N.D. | N.D. | N.D. |
| Hexabromobiphenyl | ppm | 5 | N.D. | N.D. | N.D. | N.D. | N.D. |
| Heptabromobiphenyl | ppm | 5 | N.D. | N.D. | N.D. | N.D. | N.D. |
| Octabromobiphenyl | ppm | 5 | N.D. | N.D. | N.D. | N.D. | N.D. |
| Nonabromodiphenyl | ppm | 5 | N.D. | N.D. | N.D. | N.D. | N.D. |
| Decabromodiphenyl | ppm | 5 | N.D. | N.D. | N.D. | N.D. | N.D. |
| Polybrominated Diphenylethers (PBDEs) | | | | | | | |
| Monobromodiphenyl ether | ppm | 5 | N.D. | N.D. | N.D. | N.D. | N.D. |
| Dibromodiphenyl ether | ppm | 5 | N.D. | N.D. | N.D. | N.D. | N.D. |
| Tribromodiphenyl ether | ppm | 5 | N.D. | N.D. | N.D. | N.D. | N.D. |
| Tetrabromodiphenyl ether | ppm | 5 | N.D. | N.D. | N.D. | N.D. | N.D. |
| Pentabromodiphenyl ether | ppm | 5 | N.D. | N.D. | N.D. | N.D. | N.D. |
| Hexabromodiphenyl ether | ppm | 5 | N.D. | N.D. | N.D. | N.D. | N.D. |
| Heptabromodiphenyl ether | ppm | 5 | N.D. | N.D. | N.D. | N.D. | N.D. |
| Octabromodiphenyl ether | ppm | 5 | N.D. | N.D. | N.D. | N.D. | N.D. |
| Nonabromodiphenyl ether | ppm | 5 | N.D. | N.D. | N.D. | N.D. | N.D. |
| Decabromodiphenyl ether | ppm | 5 | N.D. | N.D. | N.D. | N.D. | N.D. |

Note : - N.D. = Not Detected (< MDL)
 - MDL = Method Detection Limit
 - ppm = mg/kg

Sample Description:

- No.1 Grey foil
- No.2 White paper
- No.3 Silvery metal pin
- No.4 Transparent adhesive tape
- No.5 Transparent liquid
- No.6 Black rubber
- No.7 Silvery metal shell
- No.8 Black plastic
- No.9 Black ink

*** End of Report ***

This Test Report is issued by the Company subject to its General Conditions of Service printed overleaf or attached. Said Conditions are also available upon request or are accessible at www.sgs.com. Attention is drawn to the limitations of liability, indemnification and jurisdictional policies defined therein. The results shown in this Test Report refer only to the sample(s) tested unless otherwise stated and such sample(s) are retained for 90 days only. This Test Report shall not be reproduced except in full, without written approval of the Company.



198 KEZHU Road, SCIENTECH Park Guangzhou Economic & Technology Development District, Guangzhou, China 510663
 中国·广州·经济技术开发区科学城科珠路198号 邮编: 510663

t (86-20)82155555 f (86-20)82075125 www.cn.sgs.com
 t (86-20)82155555 f (86-20)82075125 e sgs.china@sgs.com

GZCM 780790

Member of the SGS Group (SGS SA)

Test Report

No: GZ0607107283A/CHEM

Page 1 of 5

PHOTO APPENDIX



This Test Report is issued by the Company subject to its General Conditions of Service printed overleaf or attached. Said Conditions are also available upon request or are accessible at www.sgs.com. Attention is drawn to the limitations of liability, indemnification and jurisdictional policies defined therein. The results shown in this Test Report refer only to the sample(s) tested unless otherwise stated and such sample(s) are retained for 30 days only. This Test Report shall not be reproduced except in full, without written approval of the Company.



SGS-CTC Standards Technical Services Co., Ltd.
Guangzhou Branch Testing Service Chemical Laboratory

198 KEZHU Road, SCIENTECH Park Guangzhou Economic & Technology Development District, Guangzhou, China 510663
中国·广州·经济技术开发区科学城科珠路198号 邮编: 510663

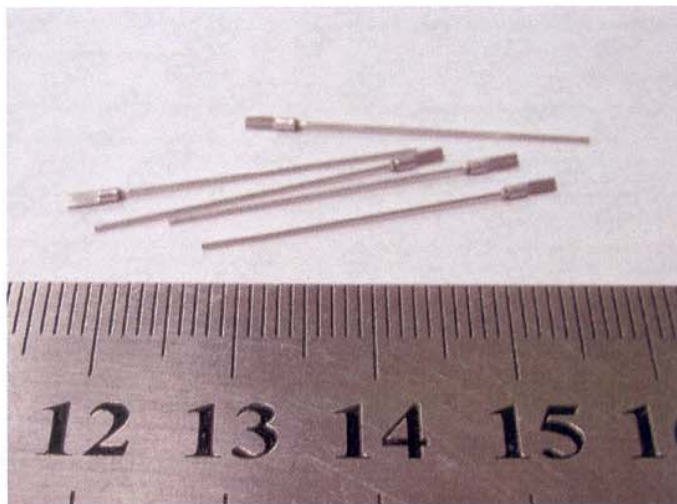
t (86-20)82155555 f (86-20)82075125 www.cn.sgs.com
t (86-20)82155555 f (86-20)82075125 e sgs.china@sgs.com

GZCM 888020

Test Report

No: GZ0607107283A/CHEM

Page 2 of 5



3



4

This Test Report is issued by the Company subject to its General Conditions of Service printed overleaf or attached. Said Conditions are also available upon request or are accessible at www.sgs.com. Attention is drawn to the limitations of liability, indemnification and jurisdictional policies defined therein. The results shown in this Test Report refer only to the sample(s) tested unless otherwise stated and such sample(s) are retained for 30 days only. This Test Report shall not be reproduced except in full, without written approval of the Company.



SGS-CTC Standards Technical Services Co., Ltd.
Guangzhou Chemical Laboratory

198 KEZHU Road, SCIENTECH Park Guangzhou Economic & Technology Development District, Guangzhou, China 510663
中国·广州·经济技术开发区科学城科珠路198号 邮编: 510663

t (86-20)82155555 f (86-20)82075125 www.cn.sgs.com
t (86-20)82155555 f (86-20)82075125 e sgs.china@sgs.com

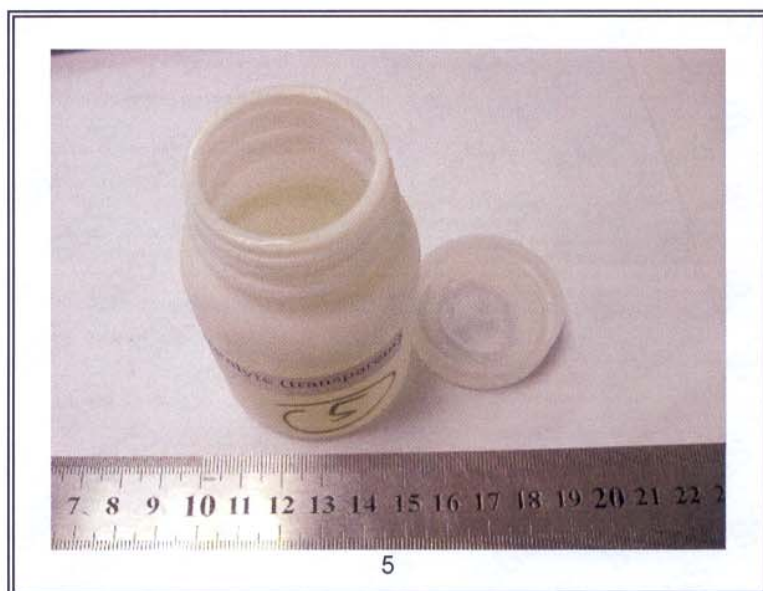
GZCM 888021

Member of the SGS Group (SGS SA)

Test Report

No: GZ0607107283A/CHEM

Page 3 of 5



This Test Report is issued by the Company subject to its General Conditions of Service printed overleaf or attached. Said Conditions are also available upon request or are accessible at www.sgs.com. Attention is drawn to the limitations of liability, indemnification and jurisdictional policies defined therein. The results shown in this Test Report refer only to the sample(s) tested unless otherwise stated and such sample(s) are retained for 30 days only. This Test Report shall not be reproduced except in full, without written approval of the Company.



196 KEZHU Road, SCIENTECH Park Guangzhou Economic & Technology Development District, Guangzhou, China 510663
中国·广州·经济技术开发区科学城科珠路198号 邮编: 510663

t (86-20)82155555 f (86-20)82075125 www.cn.sgs.com
t (86-20)82155555 f (86-20)82075125 e sgs.china@sgs.com

GZCM 888022

Member of the SGS Group (SGS SA)

Test Report

No: GZ0607107283A/CHEM

Page 4 of 5



This Test Report is issued by the Company subject to its General Conditions of Service printed overleaf or attached. Said Conditions are also available upon request or are accessible at www.sgs.com. Attention is drawn to the limitations of liability, indemnification and jurisdictional policies defined therein. The results shown in this Test Report refer only to the sample(s) tested unless otherwise stated and such sample(s) are retained for 30 days only. This Test Report shall not be reproduced except in full, without written approval of the Company.



SGS Standards Technical Services Co., Ltd.
Guangzhou Branch

198 KEZHU Road, SCIENTECH Park Guangzhou Economic & Technology Development District, Guangzhou, China 510663
中国·广州·经济技术开发区科学城科珠路198号 邮编: 510663

t (86-20)82155555 f (86-20)82075125 www.cn.sgs.com
t (86-20)82155555 f (86-20)82075125 e sgs.china@sgs.com

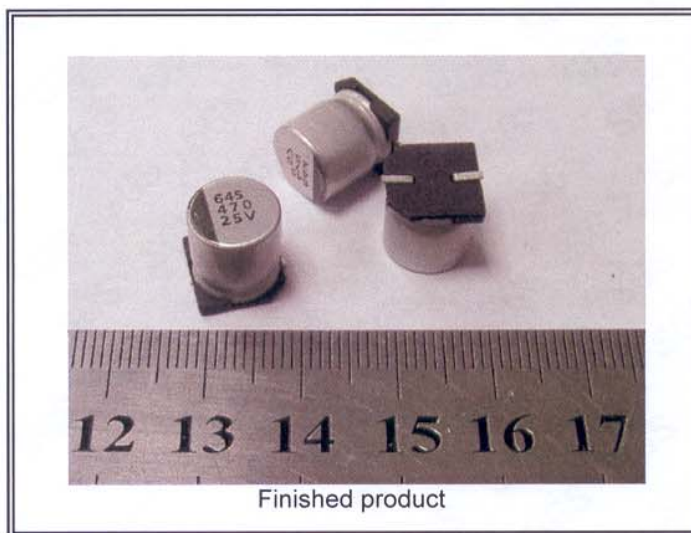
GZCM 888023

Member of the SGS Group (SGS SA)

Test Report

No: GZ0607107283A/CHEM

Page 5 of 5



SGS authenticate the photo on original report only

Signed for and on behalf of
SGS-CSTC Ltd.


Zhang Li, Amy
Sr. Engineer

This Test Report is issued by the Company subject to its General Conditions of Service printed overleaf or attached. Said Conditions are also available upon request or are accessible at www.sgs.com. Attention is drawn to the limitations of liability, indemnification and jurisdictional policies defined therein. The results shown in this Test Report refer only to the sample(s) tested unless otherwise stated and such sample(s) are retained for 90 days only. This Test Report shall not be reproduced except in full, without written approval of the Company.



SGS-CSTC Standards Technical Services Co., Ltd.
Guangzhou Branch

198 KEZHU Road, SCIENTECH Park Guangzhou Economic & Technology Development District, Guangzhou, China 510663
中国·广州·经济技术开发区科学城科珠路198号 邮编: 510663

t (86-20)82155555 f (86-20)82075125 www.cn.sgs.com
t (86-20)82155555 f (86-20)82075125 e sgs.china@sgs.com

GZCM 888024

Member of the SGS Group (SGS SA)